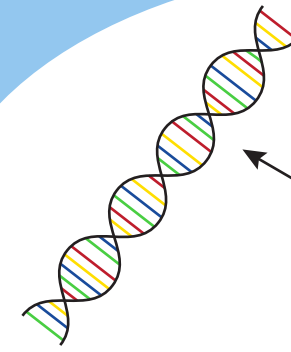


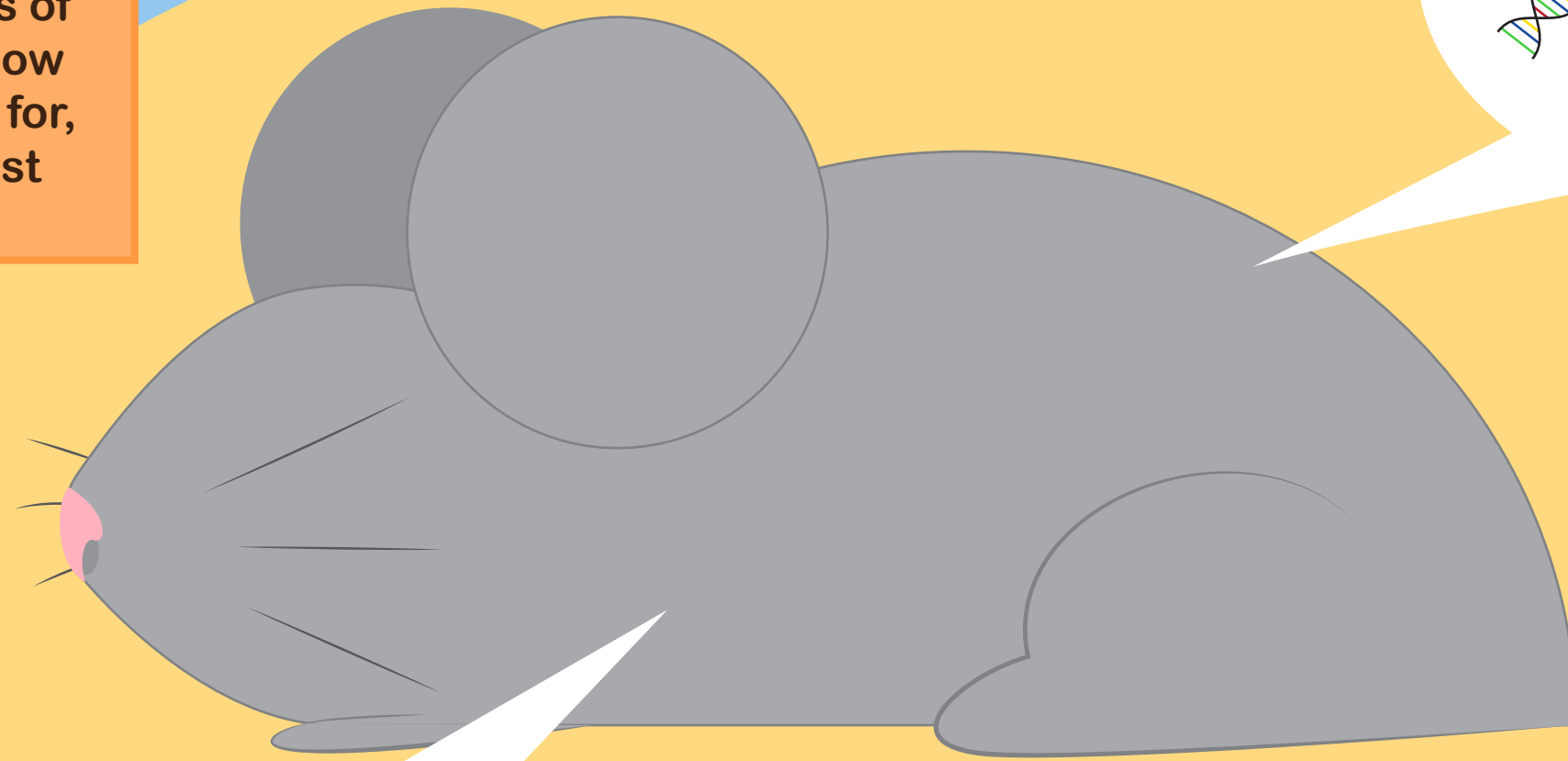
# ANIMAL RESEARCH SAVES LIVES

## WHY IS IT IMPORTANT?

Research with mice has led to treatments for Luekemia as well as the introduction of the Salk vaccine, protecting millions of people from Polio. Due to how affordable they are to care for, they tend to be the go-to test subject.

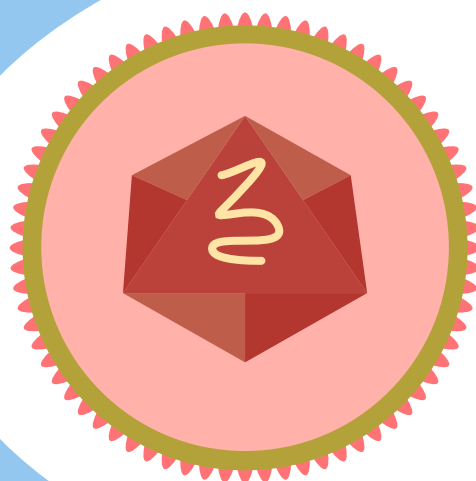


The DNA of a mouse is close to that of a human by about 85%.



## WHY MICE?

Mice are tested on because they are genetically very close to humans and can be used to determine possible genetic risks.



← Poliovirus Cell